



# West Coast **DX** Bulletin

October 17, 1978

40-78

SOUTH SUDAN Last week we got some information on a relay, this week the word is direct from DL7FT. If you have been watching for Frank from STØRK, move your schedule up to this coming Sunday, October 22nd. Frank should show sometime over the weekend or Monday and be there through the coming CQ WW Phone Test next weekend.

Frank, DL7FT, will operate to November 1st. A month later for the CQ WW CW Test, Tom Moliere, DL7AV, and out of Munich, will be at STØRK for the CQ WW CW Test, Tom being there for five days from November 22nd to 27th and this takes him across the CW Test. Between the two of them, they expect to clean up a lot of the outstanding demand for STØ.

The frequencies to watch are:

SSB: 28495kc and 28595kc 21245kc and 21295kc 14190-14195kc

The listening frequencies will be indicated but generally will be five to twenty kcs up.....

CW: 28020kc 21020kc 14020kc. Listening areas will be indicated

The above are the frequencies for the non-contest periods. During the contest Tom will be found around 21020kc only and will be listening around five up.

QSLs will go to their home QTHs.....Frank at: Frank Turek, 1 Berlin 47, 99 Petunienwegg, West Germany. Tom to Tom Moliere, Drygalskiallee 118/1909, 8000 Muenchen 71, West Germany. Sase or Sae/IRC will be required and some small evidence of support will be appreciated.

St BARTHELEMY Five members of the Clipperton DX Club will be on St. Barthelemy Island in the West Indies for the CQ WW Phone Test next weekend. St Barthelemy is at 62°51'W and 17°53'N.

The group will be heard signing FGØ/FS calls and will continue to operate for a week after the CQ Test. They plan to work all bands, both SSB and C.W. and also OSCAR.

The frequencies to watch are:

SSB: 3785kHz 7085kHz 14190kHz 21300kHz 28600kHz

CW: 3505kHz 7005kHz 14005kHz 21005kHz 28005kHz

This year St Barthelemy became a new DUF country and inquiries have been sent to the ARRL DXCC Desk on the possibility of this being a new DXCC country.

QSLs will go to F6CTK. Sase or Sae/IRC would be needed.

SERRANA BANK Plans are firming for a Serrana Bank operation in early January. The planning is well along and the group have everything including transportation rather well nailed down. HKØRKX will be in on this effort for another Serrana Bank effort by Francisco. More will be coming on this one.

SOUTH SANDWICH Some are reporting working LU3ZY at or close to 14200kHz and the operator gave his name as Guillermo. He promised to return when possible around 2330Z most days though it did appear that the pile-ups did not find Guillermo especially enthusiastic about the attention directed his way.

Those working the station have suggested that a bit of restraint might ensure the continued appearance of the station.

ARAN ISLANDS Paul Martin, EI2CA, and Peter Ball, EI7CC, will be on the Aran Islands in Galway Bay during the five days from October 26th to 31st. This will take them right across the CQ WW Phone Test and you will be hearing them signing EJ2CA and EJ7CC.

The EJ-prefix has only been used once previously and that was when EJØA was heard from the Aran Islands in June 1977. The operators are not only looking for a lot of contest activity but also some attention from prefix hunters looking for the rare EJ prefix. If you are seeking counters for the IOTA (Islands on the Air) Award, this is also a counter for that one.

During the stay, they will try all the bands from ten to eighty and will be on both c.w. and SSB. QSLs will go to the home QTHs.....EI2CA at 21 Merrion View, Dublin 4, Eire. EI7CC goes to 18 Coolgreaney Park, Arklow, County Wicklow, Eire.



SUNSPOT LOUIE A quick count would come up with something like 179 for the sunspot count on the day of this chart. Real good but better things may be just around the corner for the Deserving.

Region 1296 was due to return just about the time we cut off the chart but there were some signs on the eastern limb that it was coming with a lot of action.

Things are looking up, the flux has been getting up around the one-sixties and a lot of that exotic type DX is showing. The YI is starting to work a number of western reaches station, Desecheo showing during the daylight hours, South Sandwich on everyone lists last week and even more possible in the coming months.

There was even the well-known W6 DXer with the high total who dropped in on the W7PHQ Family Hour recently and in all seriousness asked if Okino Torishima was around. You can see what the good conditions are bringing out.

You may get some problems during the balance of this week. There are always some ants at every picnic but the times are right for the DXers.

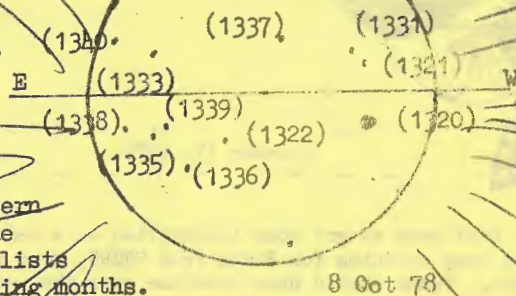
Ted Cohen, N4XX, looking for the good days ahead and the CQ WW DX Test, expects that the conditions may deteriorate a bit before the Test but to be moving up just as we get set... Ted says to expect...

Oct 17th	Above Normal	Oct 24th	Below
18th	Above Normal	25th	Below
19th	High Normal	26th	Below
20th	High Normal	27th	BN to LN
21st	High..drop to LN	28th	High N.
22nd	Low Normal		
23rd	Below Normal		

On the 26th conditions may slide off to a Disturbed situation. Right thinking DXers will note that Ted got the storm out of the way before the CQ Test came rolling over the horizon...

Those horizon watchers may find the Orionid meteor showers peaking around October 21st and that bright star near the moon from midnight to dawn is Jupiter. The Taurid meteors should be at maximum about November 4th while on November 7th, Venus, which was the evening star in early October, becomes the morning star.

And the flux?....always with us. And with the bull market in solar flux expected to continue, K6EC comes up with all the figures for the chartmakers. And Ev says it was....



No. 1320	24 spots
S13° W46°	610 millionths
No. 1321	1 spot
N16° W32°	5 millionths
No. 1331	1 spot
N13° W29°	10 millionths
No. 1332	10 spots
S23° W10°	10 millionths
No. 1333	1 spot
N18° E41°	70 millionths
No. 1335	3 spots
S19° E48°	50 millionths
No. 1336	4 spots
S30° E39°	20 millionths
No. 1337	9 spots
N22° E06°	50 millionths
No. 1338	3 spots
S16° E55°	20 millionths
No. 1339	8 spots
S16° E43°	30 millionths
No. 1340	2 spots
N21° E72°	10 millionths

	Solar Flux	Ap Index
Oct 2nd	138	9
3rd	132	9
4th	135	13
5th	146	6

	Solar Flux	Ap Index
Oct 6th	137	5
7th	142	2
8th	150	5
9th	156	9

George Jacobs in the October CQ tells you how to work out your contest plan to take advantage of the best propagation conditions. You will find it starting on Page 82



17 October 1978

DESECHEO Last Thursday a daylight operation showed from Desecheo, Bob Denniston, W0DX, and John Ackley, KV4CH/KV4KV, showed from the new one.

The operators were signing their own calls without any /designator. The word was that they would only be operating during daylight hours and were evacuating the island at dusk.

Initially the signals were not especially strong. There will be more on this one and should they still be active on receipt of this bulletin, KV4KV was on SSB and W0DX on c.w.

SAIPAN KG6RE will be activated by a JA group commencing this Wednesday, Oct 18th, and running a week to October 25th.

The operators will include JA2KLT, JA2NJC, JH2AUF and JE2BAA. They will be working all bands from One-Sixty to six meters. Look for them at—

CW	3505kHz	7005kHz	14005kHz	21005kHz	28005kHz	50005kHz
SSB	3805kHz	7080kHz	14205kHz	21275kHz	28600kHz	50110kHz

The One-Sixty activity would be on if at all possible and they should be somewhere in the 1.9mHz area....

QSLs will go to JA2KLT.

3F75 This prefix is being used to mark the 75th Anniversary of Panama's independence and will be used up to February 3, 1979. You will hear it in the CQ Tests and Juan Chen, HP1JC, will be heard signing 3F75JC. Also in there will be HP1KC who will 375KC. All this to make it easy to QSL when you hear this new prefix.

MADEIRA ISLANDS Martin, OH2BH, and his XYL Leena, OH2BE, will be in the Madeira islands from this weekend, October 22nd, and will be operating across the CQ WW DX Phone Test. They say to listen for them on the usual DX-window areas.

Marty will be making a run for a big score in the all band-single operator category and his operating will be high-speed contest operating all the way. This team is looking to make CT3 the scene for more future operations and have shipped equipment to the islands to establish a good operating set-up.

In the urban areas of the island the shot to the U.S. is not the best but Martin and Leena will be working on a spot up on the mountains with a clear shot at both Europe and the W/VE areas.

Operating frequencies are not indicated but Martin says to zero in on the big signals and you will have no trouble locating the operating. Last time-out Martin was signing CT3/OH2NH. The QSL card is a photo of the pair.

DOMINICAN PREFIXES You may be hearing something else than the usual HI8s and there are nine radio prefixes for the amateur service. HI2 was heard last year from Saona Island and plans should be coming soon on a HI1 operation. This should be heard from Beata Island. An award will be available for working all the Dominican prefixes from the radio club there in Santo Domingo and HI8MFP is handling the information on this one.

WEST COAST DX BULLETIN Second class entry and postage paid at the San Rafael, California Post Office. Published weekly by the Marin County DX Group at 77 Coleman Drive, San Rafael, Calif. 94901

Write for subscription rates. All previously published ones may be no longer valid. No, they have not gone up. Within the lower 48, only second-class (newspaper) new subscriptions being accepted.



17 October 1978

LLOYD/IRIS COLVIN The Colvins will be showing from KG4-Guantanamo Bay, sometime about this week or so and will be there for about three weeks. They plan to operate across the CQ WW DX Test from KG4 and will be working all the usual bands.

In mid-November they will move on to their next stop, 6Y5-Jamaica.. They will be in Jamaica across the CQ WW CW Test the last weekend in November. Again, they will be working everyone who needs 6Y5.

QSLs will go to the YASME Foundation, Box 2025, Castro Valley, California, 94546. Sase or Sae/IRC is requested.

Last week the Colvins were visiting in the Miami area and ready to head down into the Caribbean on their long DX excursion. Their stops will be usually two to three weeks at every stop and QSLs are just about the surest thing around. For those who have thirsted long for KG4....not a QSO but the QSL.....this will be the chance to make up for all the past frustrations. Listen around the usual spots. They will not be hard to find.

#### SHORTLY NOTED

On the Serrana Bank operations aimed for January, we mentioned this on Page One. Frankly, we lost our notes and after a half hour search gave up. Later we found them. Next week we will have the full details.

Last week the Israeli authorities asked that incoming airmail be embargoed. Surface mail was still okay, airmail was not. We got a handful of bulletins bounced back. LU3ZY was being heard very well in the Western Reaches last Thursday evening. Around 14195kc, the station was being worked by the Central Americans and the VEs on frequency. All the Deserving were aiming for Friday evening with the Northern List, the Southern List and the PY2-list all set for action. EI8H/5A said he was at the Irish Embassy. Slim is often there to pick up his QSLs.....Yes? Hardly! EI8H is a legitimate call, the /5A etc operations are the suspected.

Darlene and Joe Magen are on a long trip and a week back were in Frankfurt, Germany. They expect to be in Istanbul about this time and hoping to operate TA1ZB. A 3YØ was heard a week back, said his name was 'Hans' and would be on Bouvet for about ten days. This one was signing 3YØAK, coming into the Western Reaches at 21266kc about 0250Z on the long path. Said to QSL to DK2PZ. There has been no confirmation, or cross-confirmation on this one. What the heck! Work 'em first.... 1978 has been a year of big DX and big DX surprises. Don't slow down now.

Jacky, F6BBJ, apparently has run into a transportation fix and the plans for Abu Ail are reported as not on track. The Italians are hinting that something startling may come on ZA-Albania activity. Just stay tense!! The EAØNS was reported as from Graziosa Island and celebrating the first year of reign of King Juan Carlos.

VK9XW on Christmas Island is often found around 14260kc from 1400Z on Mondays and Wednesdays. The time is not really solid and the station may show as much as an hour earlier. QSL to VK6RU.

**QSLs by W6BA**  
**\$15.00 for 1,000**

1. Design your own card. Cards are printed by OFF-SET press so anything that can be photographed can be printed, but only on one side.

2. We print only in black ink, but your choice of white, yellow, green or blue stock,

3. Shipping charges are extra. Less than \$2.00 by UPS.

**W6BA Star Route 2 Box 241 29 Palms, Ca. 92277**

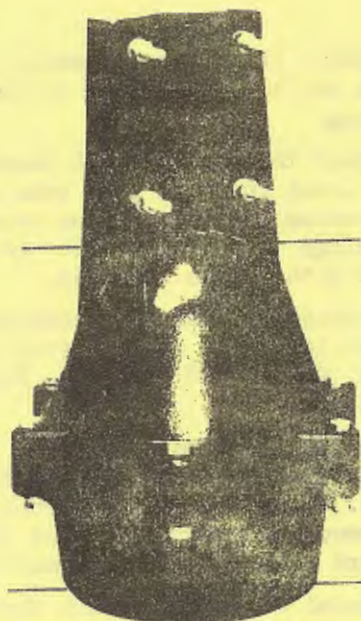


# meet the Fantastic TAIL TWISTER<sup>TM</sup>



## ROTATOR SPECIFICATIONS

Installation .....	Inside tower
Diameter .....	9-5/16"
Mounting .....	5/16" Bolts (6 supplied)
Height .....	14-1/16"
Mast Size .....	Up to 2" O.D.
Rotator Weight .....	18-3/4"
Wind Load Rating .....	Antennas up to 28 Ft. <sup>2</sup>
Bearings .....	138 Ball bearings (3 races)



**HEAVY DUTY ROTATOR.** . . that starts with the world famous HAM II design, then adds a totally new thick cast aluminum bell housing with wider, stronger reinforcement webs to easily support the largest antenna. The upper mast support is predrilled to allow bolt-through installation to prevent mast slippage. A new three ring ball-bearing assembly provides side thrust control as well as increased vertical load carrying capacity.

The new high-torque motor, with a metal pinion gear to guard against stripping, incorporates automatic coast-down pre-brake action. Drive is transmitted through three stainless steel spur gears with final drive into a new machined steel ring gear. A new thicker, wider wedge brake assembly securely holds the antenna at rest. Stainless steel 5/16" hardware completes this heavy duty rotator package.



## CONTROL BOX SPECIFICATIONS

Input Voltage .....	110-120 VAC
Size .....	8-3/8"W x 8-1/4"D x 4-3/8"H
Line Cord .....	3 Wire (Grounded)
Control Cable Requirements .....	Belden 8448 up to 120' (or equivalent)

**NEW CONTROL BOX DESIGN.** . . that will please the professional. . . full regulated indication of antenna direction, snap action control of clockwise and counterclockwise rotation, snap action control of brake, separate on/off switch for instant antenna location as well as front panel control of calibration. New L.E.D. indicators signal rotation and brake operation. And, housed in a black satin anodized case, it looks as good as it works.

The TAIL TWISTER<sup>TM</sup> is designed for in-tower mounting to assure a secure base for its load capabilities. The tower selected should be checked to verify its load rating is adequate for the installation intended. Though the TAIL TWISTER can be mounted with four 5/16" bolts, it is recommended all six be used to provide installation strength to match the rating of the rotor. Like all Cornell-Dubilier rotors, the TAIL TWISTER comes backed by over 30 years of experience and proven performance in supplying the communicator with quality products he can depend on.

The suggested list price for the TAIL TWISTER is \$325.00. Pick up your telephone and call Don, W5UW, for the SPECIAL DXer's price.....\$249.00! Only for Deserving DXers. Save almost 25% by making one phone call. Use the DX HOT LINE .. (713) 658 8021. Be sure to say the magic words....."I am a Deserving DXer sent by Red Eyed Louie".

## MADISON ELECTRONICS SUPPLY

1508 McKINNEY  
HOUSTON, TEXAS 77002



17 October 1978

SHORTLY NOTED Sable Island is not where it used to be. In the last 200 years the island has shifted nine miles to the east, the wind and currents moving the island along.

There is a report that the KS6 QSL Bureau has folded. Some of the reasons being lack of local interest plus some support from the 'temporary' KS6s. This plus the increasing confusion being generated by the new FCC call assignments has brought things to a standstill. Local advice out of Samoa is that you had best go direct with a sase enclosed.

There was a Trinidad operation scheduled for two days last week, PY5GA and PY5EG, heading for the island to operate from October 12th signing PY0GA and PY0EG. If you heard them, QSL to P.O Box 1455, 80000 Curitiba, Parana, BRASIL. Sase or Sae/IRC needed.

The PYs are not finished yet, however. They are planning a month-long burst of activity in December to include Fernando de Noronha, Rocas Atoll and the St Peter and Paul Rocks. Rocas Atoll has turned up before but the PYs are noting that it now has autonomous administration and they are looking for the 'separate and distinct' category. There will be more information coming on the PY planning.

That 4L0KR special call was to mark the 350th Anniversary of the city of Krasnayarsk in central Siberia. 4L0KR said to QSL to UK0AAB. While in that part of the world, it might be noted that UK9AAN at the Ural Polytechnic at Chelyabinsk has an antenna up with five over five on ten meters, spaced ten meters apart. All this on top of a 14 story building. It should be tuned for the CQ Test.

There is also a report that there is a c.w. operator at Franz Josef on a tour of duty there but this one is not licensed. In the past his activity has been at club stations but there is a possibility of him putting UK1PAA on the air. This may start to show during November. Antennas will be a vertical plus the usual dipoles.

Jack Webb, W5JW, has been active from Kwajalein and was signing KX6BU on twenty c.w. John Attaway, K4IFF will be in Iceland for the CQ Test later this month and will be signing /TF3 in the test. QSLs for K4IIF/TF3 will go to Leo Haijsman, W4KA, Leo Haijsman, 1044, SE 43rd St, Cape Coral, Fla 33904.

VE3BWK/4U will be directing his QSLing to WA3HUP. TT8AL hard on ten meter SSB said he is a doctor specializing in the maladies causes by the Tsetse fly and is at a hospital in Ft. Lamy. Said to QSL to Box 12, Fort Lamy, Chad. He also said that only TT8AL and TT8AB are the only active stations at this time.

Where there's a will,  
there's not always a way.

BUT THERE IS SOMETHING THAT CAN HELP  
THE SB-220 OWNER---

Modernize your SB-220 with an electronic  
bias switch.

Reduce heat generated in tubes and plate transformer due to idling current.  
Extend tube life by 20% to 30%.  
Reduce generation of shot noise. CW break-in possible.  
Conserve energy. Reduce your power bill.  
Professional quality circuit board. 5.6" x 1.6"....installs in 15-20 minutes.  
Soon!...models for other amplifiers.

\$39.50 plus \$1.50 shipping

90 day warranty. Same day shipping if accompanied by money order

CHALMETTE COMMERCIAL COMPANY  
Box 1240  
Chalmette, Louisiana 70044



17 October 1978

REPORTS FROM RED FISH LOUIE

Everyone's voices was suddenly lifted;  
And DX came like the setting sun.....

TEN METERS THRIVES

CT2CE	28059/1950/Oct	5w	HA6KVD	28018/1725/Oct	8m	RA3AHW	28038/1315/Oct	8m	UL7AFD	28007/1330/Oct	8m
DJ9NX	28050/1705/Oct	8m	HB0NL	28027/1330/Oct	7e	SP7ASZ	28150/1415/Oct	6w	UM8MCO	28018/1325/Oct	7m
EA3XZ	28012/1710/Oct	8m	HB0BNP	28024/1440/Oct	8e	UA2FAL	28023/1345/Oct	7m	OY7ML	28005/1825/Oct	8e
EA3LY	28011/1545/Oct	6w	HM2JN	28023/0000/Oct	8e	UC2LBA	28007/1350/Oct	7m	VR3AH	28019/2335/Oct	8e
EP2IA	28026/1425/Oct	8e	HK0BKX	28013/2050/Oct	1m	UD6DU	28031/1335/Oct	8e	WH2AAI	28020/2310/Oct	8m
GB2BP	28025/1540/Oct	6w#	J28AY	28005/1800/Oct	6e	UC2OBI	28008/1355/Oct	8m	Y08FR	28013/1600/Oct	6w
GD5YEK	28031/1800/Oct	2e	OK2KR	28030/1720/Oct	8m	UI8ADN	28006/1410/Oct	8e	YU3DOX	28012/1540/Oct	6w#
GD4BEG	28027/2050/Oct	7m	OZ5DL	28015/1420/Oct	8m	UK2GDZ	28010/1410/Oct	7m	ZL1AH	28021/2200/Oct	5m
GW4GKG	28020/1430/Oct	7m	OZ6XT	28014/1700/Oct	8m	UK6HCN	28067/1320/Oct	8m	LZ4LW	28037/1420/Oct	7m
HA1TU	28020/1705/Oct	8m	PA0GAM	28012/1715/Oct	8m	UL7AFD	28005/1420/Oct	8e	8P6JA	28039/1430/Oct	8m
HA8UY	28027/1700/Oct	8m	PY6HA	28100/1325/Oct	7m	UL7RAS	28006/1330/Oct	8m			
GB2EX	28600/2015/Oct	2e	GJ2LU	28630/1530/Oct	6m	OE9RMJ	28575/1950/Oct	8m	VR3AR	28600/2120/Oct	1m
DM3UO	28580/1815/Oct	8m	HA3KNA	28600/1455/Oct	6m	OH8SR	28580/2000/Oct	8m	YU3OV	28610/1515/Oct	6e
DM3PC	28580/1830/Oct	8m	HA5KKN	28637/1525/Oct	6m	OK3KAG	28588/1520/Oct	6m	YV4APY	28523/2030/Oct	7w
DT3LF	28574/1800/Oct	8m	HB9AXA	28618/1720/Oct	6m	OZ1TV	28567/1535/Oct	6m	ZL1HW	28577/0105/Oct	6m
EA5TA	28565/1715/Oct	6m	HB9ZE	28541/1545/Oct	6m	S8ABC	28589/1855/Oct	1e	ZSLMG/H5	28595/1905	7w
EA8QL	28518/2016/Oct	8m	IS0QDU	28633/1920/Oct	8m	ST0RK	28590/2010/Oct	2e	ZP5CD	28594/1905/Oct	6w
FP8DH	28567/1740/Oct	7m	IT9ZGY	28555/1930/Oct	7m	SP9AI	28515/1540/Oct	6m	7X2BK	28639/1800/Oct	4m
FP8DP	28530/2000/Oct	1m	JY9VR	28590/1530/Oct	6m	UK3ABE	28575/1455/Oct	6m	9K2FP	28632/1540/Oct	6m
FR7BE	28502/1445/Oct	1m	KM6BI	28607/2325/Oct	7m	UB5CDF	28583/1535/Oct	6m	9K2FX	28600/1500/Oct	1m
EP2RL	28610/1450/Oct	6m	LU2KAK	28531/1905/Oct	6w	VK4BZ	28529/0055/Oct	6m	9H1ED	28501/1640/Oct	6w
GW4BIQ	28570/2045/Oct	6m	OE5AWL	28552/1825/Oct	8m	VK0ZR	28595/0115/Oct	6m			

LOW BAND LOUIE

DM3RGL	7028/0250/Oct	7m	HA1SB	7034/0535/Oct	8m	ON4UM	7009/0000/Oct	5e	UK2BAS	7004/0450/Oct	5w
DF1DN	7026/0050/Oct	3m	K7CA/HC1	7045/0040	5m	PA0LQ	7028/2345/Oct	3m	UK2WAJ	7021/0025/Oct	5e
DJ3LR	7021/0020/Oct	5e	I3YG	7040/0030/Oct	7m	PA0JG	7027/0200/Oct	7m	UK3ABO	7004/0010/Oct	5e
DJ0UP	7000/0535/Oct	5w	I0KNM	7043/2345/Oct	6w	SM5AYY	7006/0040/Oct	5e	UP2BFI	7038/0110/Oct	7m
IG7AS	7011/0310/Oct	2w	I2FGP	7027/0525/Oct	5w	U4LFCO	7006/0115/Oct	5e	UK1ABR	7006/0120/Oct	5e
IK8BG	7005/0955/Oct	4m	OE6NKG	7008/0510/Oct	5w	UA9KAA	7005/0125/Oct	5e	VP1EW	7007/0315/Oct	2w
FO0AF	7006/0305/Oct	1m	ON5GK	7000/0515/Oct	5w	UB5YAW	7045/0130/Oct	5m	YU2ADE	7005/0120/Oct	5e
HB0NL	7005/0230/Oct	ten	OK2KMR	7033/0215/Oct	7m	UI8ADQ	7002/0015/Oct	3m	ZS6DN	7011/0310/Oct	5w
KL7AG	3515/1100/Oct	6m	UA0FBY	3501/1245/Oct	5m	YV5ZZ	3848/0200/Oct	3m			
K3SXA/KV4	3504/0225/Oct	6m	UA0ZBP	3510/1215/Oct	6m						
I29MM	3784/1120/Oct	5m	VK3KS	3505/1145/Oct	2m						

AFRICA CW

CT2CW	14019/0145/Oct	3e	SU1MI	14031/0230/Oct	6w
EP2W	14025/1245/Oct	7m	TU2IE	14027/2110/Oct	5e
J06G	14008/1410/Oct	10w	ZD7WT	21037/1800/Oct	4m
J28AY	14005/0210/Oct	8w			

AFRICA USB

CT2CW	14215/2130/Oct	5m	TR8GDC	14202/2040/Oct	3e	3B8DZ	14219/0320/Oct	2e	VE3BWK/4U	14208/1320	
CT2CW	14223/2300/Oct	6w	TR8AC	14215/2130/Oct	5m	3B8BJ	14205/0345/Oct	5e	6W8DY	14209/0745/Oct	4kh
J06G	14243/0425/Oct	3e	TU2HZ	14215/2130/Oct	5m	3D6BK	14224/1430/Oct	7w	7X2LS	14204/2200/Oct	1m
ST0SA	14259/0515/Oct	6w	XT2AT	14215/2130/Oct	5m	3D6BP	21253/1945/Oct	6w	9G1HZ	21356/2015/Oct	5e
ST0RA	14225/1530/Oct	8w	ZS6BOK/H5	21295/1920	7m	5U7AG	14215/2130/Oct	5m	9Q5JH	14211/2140/Oct	1e
SU1DP	14159/1225/Oct	10m	3B8CJ	14224/1530/Oct	7w	5Z4RT	14215/1435/Oct	3m			

ASIA CW

AP2WN	14194/1415/Oct	4m	GR9AJ	14205/1345/Oct	4m	JT1KAI	14204/0100/Oct	6m	VU2TH	14214/0125/Oct	6m
AP2US	14199/0150/Oct	4m	EP2MS	14221/1415/Oct	4m	UA9USA	14223/0105/Oct	6m	VU2CK	14195/0240/Oct	6m
AP2UR	14203/1820/Oct	6m	HZ1AB	14202/2025/Oct	3e	UG6AI	14234/1410/Oct	4m	VS6AK	14210/1135/Oct	2e
AP2AD	14202/1425/Oct	6w	HZ1JB	14203/0210/Oct	8e	UK9ADY	14223/1355/Oct	6m	4S7JD	14212/1225/Oct	2e
AP2MQ	14212/1415/Oct	6w	HL9UD	14208/1220/Oct	6m	UM8FZ	14235/0515/Oct	7m	9V1SW	14197/1310/Oct	5m



17 October 1978

# MORE RED EYED LOUIE STUFF

All I have, you thought was given--  
Life and laddies, you were wrong;  
In a DXer's secret heaven  
There is always one last song.....

## ASIA CW

AP2TN 14024/0235/Oct	9e	UF6FDL 14027/0330/Oct	6e	UI8FAI 14010/0200/Oct	4w	UL7TD 14064/0430/Oct	6e
EP2IA 14027/1235/Oct	6e	UD6DLJ 14044/0400/Oct	8e	UJ8AG 14029/0245/Oct	6e	VU2TS 14008/1300/Oct	7m
EP2WR 14003/0355/Oct	6w	UH8BU 14034/0355/Oct	8e	UK7GAA 14036/1430/Oct	9w	VU2KMK 14027/1100/Oct	3e
HS1ABD 14025/0120/Oct	1e	UH8HCE 14058/0405/Oct	8e	UL7LAR 14006/0215/Oct	8w	4S7NE 14030/1100/Oct	often
JT1KAA 14028/0235/Oct	6e	UH8CJ 14024/0250/Oct	6m	UL7EAR 14020/0250/Oct	6m	9M2FK 14034/1045/Oct	2e
UG6AG 14027/0350/Oct	8e	UH8CD 14023/0255/Oct	6e	UL7GW 14023/0230/Oct	6e	4Z4KX 14014/0225/Oct	6e
UF6FDI 14004/1415/Oct	10w#	UI8ADQ 14026/0230/Oct	9e	UL7EAQ 14036/0250/Oct	6e		

## EUROPE CW

GULCHY 14024/0030/Oct	8w	OK1KRS 14018/1505/Oct	9w#	UK2GAC 21026/1615/Oct	often	9H1ED 14021/0600/Oct	6w
HB0NL 14005/1515/Oct	6w#	TF3OM 14043/0605/Oct	7w	UK5MFD 14023/0410/Oct	4w	9H1BT 14022/2105/Oct	3e
HB0BKN 14033/1125/Oct	7e	TF3US 14002/0145/Oct	7w	UR2RWA 14003/1515/Oct	8w#		
LZ2FX 14024/1520/Oct	6w#	UB5EGF 14013/0440/Oct	6w	YU1ONQ 21041/1345/Oct	5e		

## EUROPE SSB

CT1OF 21327/1915/Oct	5w	HA5KFL 14202/2240/Oct	6m	OH2MM 14220/0515/Oct	7m	UB5MGG 14246/1505/Oct	6w#
DM2AOL 21278/1730/Oct	5m	HB9AVT 21386/1810/Oct	5w	OH6WY 14208/0400/Oct	7m	UC2CW 14205/1430/Oct	6w
DM5ZAA 14220/1500/Oct	6m#	IT9ZGY 21277/1915/Oct	5e	SV1AE 14202/1515/Oct	5w#	YO8AP 14210/1420/Oct	6w#
EA6EU 14233/0505/Oct	6m	IQ0DUG 21321/2035/Oct	6w	TF3SV 21303/1705/Oct	5w	ZB2BU 14209/2145/Oct	3e
GW4BIQ 21359/1850/Oct	5w	LA5DQ 21290/1720/Oct	6m	UA6LDL 21292/1655/Oct	5w	9H1FN 21282/2015/Oct	6w

## ELSEWHERE'S CW

CE9AE 14003/0545/Oct	5w	HP1AC 14010/1115/Oct	1e	YS10 14021/1320/Oct	2e
CO5DM 14016/2200/Oct	6w#	HF0POL 14019/0450/Oct	8w		
FM7WU 14025/1425/Oct	3e	KX6BU 14028/1115/Oct	4e		

## ELSEWHERE'S SSB

A35CR 14295/0750/Oct	2e	FP8DX 14207/0225/Oct	7w	OX3BK 21278/2000/Oct	6w	VK9XW 14260/1315/Oct	2e
A35DG 14218/0945/Oct	2e	HH2MB 14200/1450/Oct	7w	PJ2AAX 14208/0015/Oct	2m	YS10 21253/1800/Oct	6w
C6ACA 14285/0230/Oct	2m	HI8KW 14254/0240/Oct	8m	PJ2FR 14225/0130/Oct	2m	5W1AE 14204/0405/Oct	4m
FB8YF 14191/1205/Oct	6m	KJ6BZ 14251/0500/Oct	6m	VK9CCT 14176/1100/Oct	5m	5W1BZ 21293/0220/Oct	8m
FG7AS 14200/1230/Oct	4m	KX6BU 14238/0845/Oct	1e	VP2AK 14205/2330/Oct	2m		

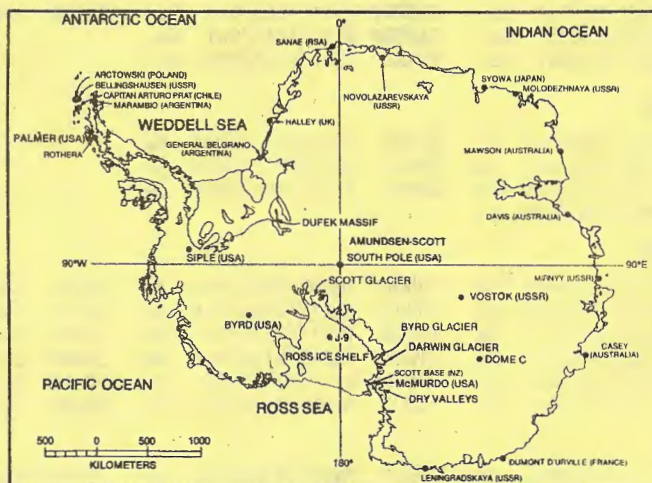
{e = eastern states m = middle states w = western reaches kh = hawaii, etc. all times in gmt}  
{# = long path ??? = Slim.....who has not been too active the last week}

ANTARCTIC More than one has asked where to point the beam for an Antarctic station. Generally you point it sort of south and hope. Do just that and you will not be too far off.

The map to the right might help. You can check the Palmer Peninsula and see where HF0POL is close by....in the South Shetlands. Also a few other bases by a variety of nations.

CE9AA/FB8Y/HF0/KC4/LA/LU-Z/OR4/UA1/UK1/VK0/VP8 ZL5/ZS1/3Y/4K/8J....work them all and they count for one DXCC country. The doctrine of 'distinctively separate administration' not quite applying in this area.

It still is a big area and this may help locate some of the antarctic bases.





17 October 1978

# CALENDAR

SOUTH SUDAN  
ICELAND

PETER ISLAND

SERRANA BANK

RHODES

ARAN ISLANDS

St BARTHELEMY

PANAMA

MADEIRA

NAVASSA

CHATHAM

WADM

RSGB 40 METER TEST

CQ WW DX PHONE TEST

CQ WW DX CW TEST

SOUTH SANDWICH

DL7FT at STORK from October 22nd. Update on previous info....

K0CMF signing /TF until October 22nd

K1LIF signing /TF in the CQ WW Phone DX Test

3Y0BZ by Willy DeRoos in the coming months

Plans developing for January operation

W9GW looking to operate to Oct 20th.....

EI2CA and EI7CC signing EJ2 from October 26/31st

French DX Group for a week from 28th of October....

3F75 prefix marking the 75th Anniversary of Panamas Independence...to Feb 79

Martin, OH2BH, headed for the high spots for the CQ WW Phone Test

About a month off.....Zero group over the CQ WW CW TEST

ZLs there next week for the CQ WW Phone Test

This weekend.....October 21/22nd

October 21/22nd

October 28/29th

November 25/26th

LU3ZY reported as active.

## CQ WW DX PHONE TEST

October 28/29th

SOUTH SUDAN

ICELAND

St Barthelemy

GUERNSEY

St LUCIA

BRITISH VIRGIN IS.

CURACAO

TURKS/CAICOS

BAHAMAS

GALAPAGOS

HAITI

CHATHAM

COLOMBIA

KENYA

ARAN ISLANDS

DL7FT at STORK across the test

K1LIF/TF

Clipperton DX Club members across CQ Test

GU5CAA in a single-band effort

K2IGW from October 12th through CQ Test-

VP2BDH by Six-land group

Potomac Valley at PJ9JR....looking for big run

West Palm Beach Club in all band effort

K1NT/C6A by Southeastern DX Club of Atlanta

HD8A by Quito Radio Club

HH2CQ by HH2MC

ZLs going for big run across the CQ Test

HK5AJF and crew of twelve for big CQ Test score

5Z4QT by JA3KWJ in the CQ Test

EI-team signing EJ2 across the test

## CQ WW DX CW TEST

November 25/26th

GUERNSEY

KENYA

NAVASSA

GU5CIA in all band, big thumping operation

5Z4QT by JA3KWJ for the c.w. test

/KP1 across the CQ WW CW Test

# MAGICOM

## RF SPEECH PROCESSORS

- INCREASE TALK POWER UP TO 8DBI
- IMPROVE PROCESSED SPEECH QUALITY

## RF SPEECH PROCESSOR FOR

### TS-520

\$40 p.p. USA \$43 AIRMAIL ELSEWHERE

## RF PROCESSOR MODULE FOR

### TS-820

\$25 p.p. USA \$28 AIR MAIL ELSEWHERE

## MAGICOM PROCESSING EQUIPMENT FEATURES:

- FULLY REVERSIBLE INSTALLATION - NO MECHANICAL REWORK
- COMPLETE ILLUSTRATED INSTRUCTIONS
- FACTORY ASSEMBLED AND TESTED

# MAGICOM

P.O. BOX 6562A  
BELLEVUE, WA 98007

Reviewed in October's CQ  
Page 52

**NEW**  
AVAILABLE AFTER  
SEPTEMBER 20, 1978

**NEW**  
AVAILABLE AFTER  
SEPTEMBER 20, 1978



ARRL The deadline for the ARRL Repeater Directory is November 1st and if there are any changes, you had better rush them off to Newington. The Directory is a handy guide for the VHF type and when the new edition hits the bricks, it would be well to obtain a copy.

Ballots for the 1978 Director elections should be in the mails and it would not hurt to study the candidates if you are in a division where an election is being held this year.

You could also give a bit of attention to the DX types who are candidates and these include—

Central Division	Don Miller W9NTP (incumbent)	for Director
	Gary Huber AB9M	for Vice-Director
Rocky Mountain	Harlan Bercovici W0MYN	for Director

Up in the New England Division there are DXers noting that John Sullivan, W1HHR, has been receptive to the problems of DXers.

Get your ballot in should you be in a division holding elections. The Northwest Division election has been put in a holding pattern pending the results of the lawsuit against the ARRL. Wayne Green, W2NSD/1, in the October '73' has some comments on this election.

TNX to W1AB, W1DA, WA1BOT, W1HX, K1LR, W2FP, W2HAZ, W2NC, WA2SON, K3ND, K4BKK, W4HU, K4IIF, W4LCL, AA4T, N4XX, W4ZR, W5AK, K5AQ, K5DUT, K5IH, K5GZ, K5OVC, K5TSQ, K6EC, W6EYR, W6JD, W6KPC, N6OB, N6OZ, K6SX, WA6TLA, AE6U, WB6UJO, K6WR, K6YK, W6ZPV, K7ABV, N7MW, WA7OBH, N7UT, K8CFU, W8GE, K8IA, K8IP, W8MAW, K8RD, W8UVZ, K9CT, W9DH, K9JS, K9RL, W9SS, W9TKV, K9UR, W0BW, W0PT, W0RTZ, KH6BZF, HI8MFP, HP1JC, JA2KLT, OH2BH, PT7YS, DL7FT, EI7CC.

ffffff

WEST COAST DX BULLETIN Published every week by the Marin County DX Group. One of the local QRPers came up the hill last week, this one a fairly newly minted DX type. "Some of the terms I hear on the air confuse me," the QRPer said, "and some give me real trouble. I keep hearing about 'the usual DX Frequencies' and 'DX Is!'. But I don't really believe I understand them. Not at all." This was not an unusual situation and we had heard the puzzled words before. So we hauled the QRPer up the hill to the Old Timer who was drowsing in the unusually warm fall weather. There we ran through the whole routine again and we were sure that the Old Timer would truly have all the answers. We were right again. "Elephantem ex musca facis," the Old Timer said, "quid opus est verbis?" Son of a Gun! The Old Timer had come through again. Later we asked the QRPer how he felt with the vast enlightenment that he had acquired and the answer was slow in coming. "Somehow I find my head nodding up and down in agreement with the Old Timer when he talks," the QRPer said, "but inside me it seems more that it is going back and forth. The words sound well but I am not sure just what he means. Not sure at all." Obviously the QRPer had hit a dry spot on the long road to DX knowledge. We were tempted to tell the QRPer what the Old Timer meant but then the realization was there that the understanding must come from within and all true-blue DXers spend a life time acquiring the necessary knowledge to understand the Eternal Truths. And if you now know what 'the usual DX frequencies' are, you are on the right road to DX triumphs. And one of these bright mornings, when the sky is bright, the sun warm and the day is new, you will understand "DX Is!" and never again will you have to wonder. Prepare yourself!! The Great Days of DX are coming and you must know "DX Is!" And though we publish every week, our subscription rates are a moveable feast and you will have to write to gain that inner knowledge. Meanwhile, let not the search for the DX truths slow your response, work 'em all!

West Coast DX Bulletin  
77 Coleman Drive  
San Rafael, Calif. 94901

first  
class